

Gloucestershire Wildlife Trust Ecology Survey and Report

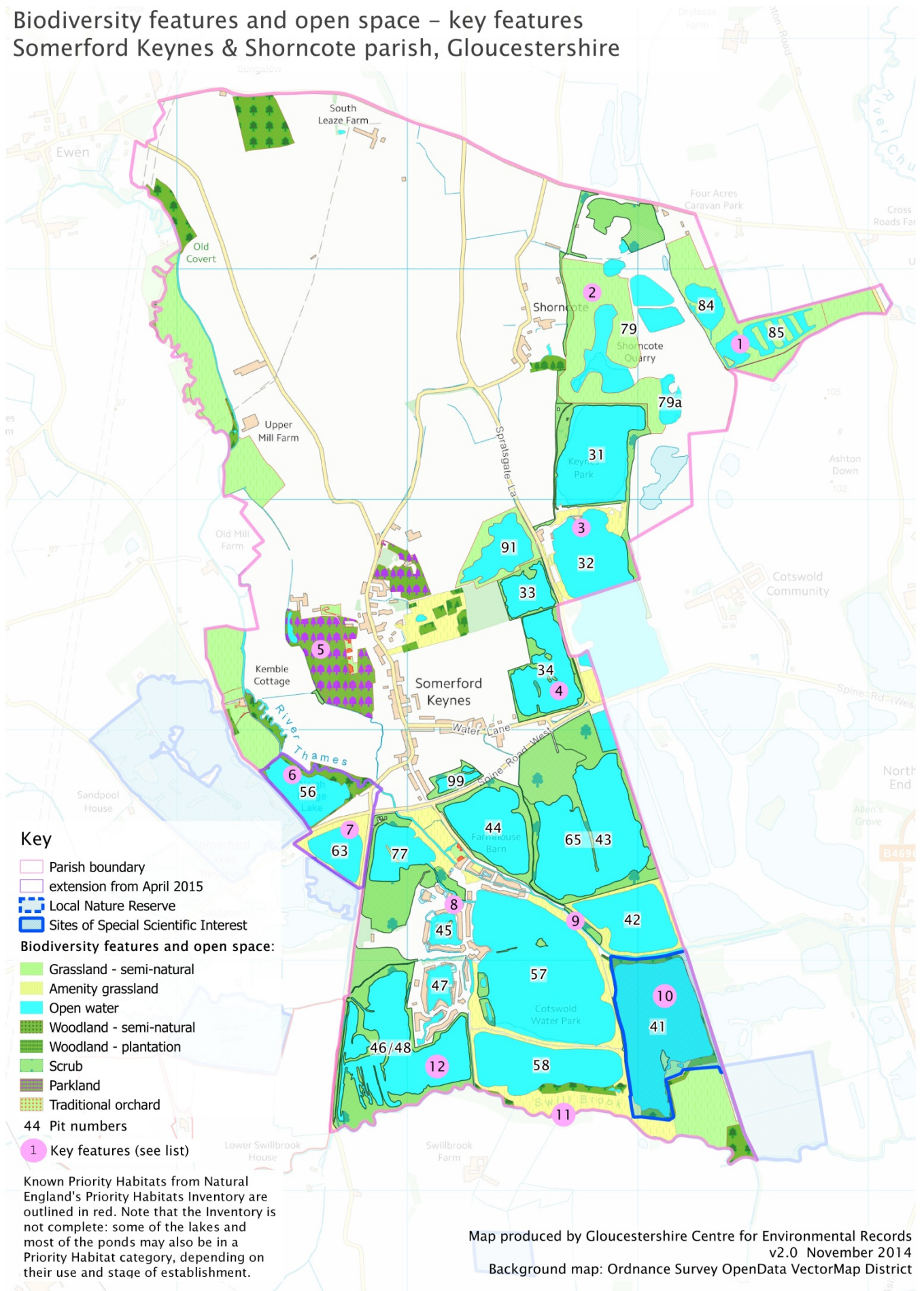
Somerford Keynes Parish (2014)

In November 2014, the Gloucestershire Wildlife Trust was commissioned to undertake an ecology survey of the Parish. A number of important biodiversity open spaces were identified and notable wildlife was recorded, including 194 rare or protected species.

This document is a collection of the reports produced, as part of this survey, by the Gloucestershire Centre for Environmental Records and includes:

- Biodiversity features and open spaces - key features map, Somerford Keynes and Shorncote parish, Gloucestershire
- Biodiversity features and open spaces - all features map, Somerford Keynes and Shorncote parish, Gloucestershire
 - Detailed frame 1 - Shorncote
 - Detailed frame 2 - Somerford Keynes
 - Detailed frame 3 - Lower Mill Estate
- Notable wildlife in Somerford Keynes and Shorncote parish - key species hot spots
- Distribution of rare and protected species records
- Wetland bird survey

Biodiversity features and open space – key features Somersford Keynes & Shorncote parish, Gloucestershire



Key biodiversity and open space features in Somerford Keynes and Shorncote parish				
No. on map	Name	Type	Status	Comments
1	Shorncote reedbed	Gravel pit lake	Priority Habitat	Not included on Natural England's latest Priority Habitat Inventory, which is out of date for this area.
2	Shorncote Quarry	Mixed grassland		Several grassland, scrub and lake habitats
3	Keynes Country Park	Gravel pit lake	Priority Habitat	Lakes and an artificial paddling beach
4	Cokes Pit	Gravel pit lake	Local Nature Reserve	Popular nature reserve
5	Manor House, Somerford Keynes	Parkland	Priority Habitat	Included on Natural England's "wood pasture and parkland" inventory as well as their Priority Habitat Inventory.
6	Neigh Bridge Lake and Country Park	Gravel pit lake		Will be in the parish from April 2015.
7	Netherwood Lake	Gravel pit lake		Will be in the parish from April 2015. A coarse fishing lake.
8	Lower Mill Estate	Gravel pit lake		House & leisure development and series of lakes, some managed for wildlife.
9	River Isis (Upper Thames)	River		Lots of protected species records are along the river.
10	Cotswold Water Park SSSI	Gravel pit lake	SSSI	Large, established lake with tree & scrub surround.
11	Swill Brook	River		Important for species such as otter.
12	Swillbrook Lakes	Gravel pit lake		Popular nature reserve esp. for birdwatching

Notes:

The above features were mapped by GCER from a variety of sources including:

- Natural England's Priority Habitat Inventory and designation maps;
- Ordnance Survey Open Data Vector mapping;
- Infoterra aerial photography, used under licence from Natural England;
- GCER Phase 1 Habitat Survey;
- Cotswold Water Park leisure map.

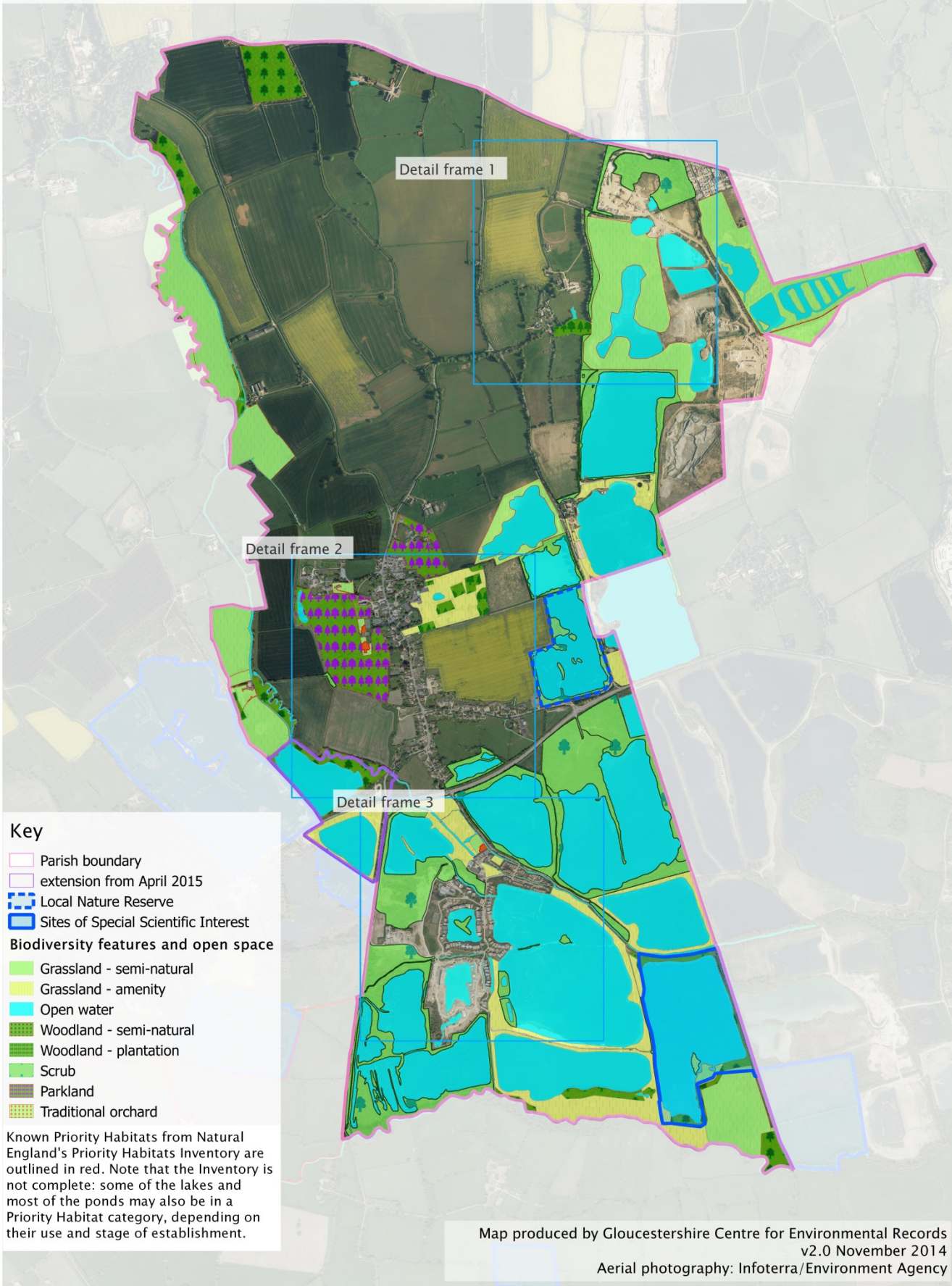
Features marked as "Priority Habitat" are listed on Natural England's Priority Habitats Inventory. Note however that the Inventory is rather out-of-date and many of the lakes and ponds are likely to fall within a Priority Habitat Category as well.

Other features of interest too numerous to number individually include:

- Fragments of traditional orchard, now a Priority Habitat in its own right;
- Small areas of grassland in churchyards and amenity areas;
- Semi-natural floodplain meadows alongside the River Thames (Isis) – also a Priority Habitat;
- Small farm ponds, most of which fall into the Priority Habitat ponds category;
- Extensive developing scrub, some of which, whilst not listed as a Priority Habitat, is highly significant for birds such as warblers and nightingales.

GCER cannot guarantee that the lake boundaries are all precisely up-to-date as many are in a constant state of change.

Biodiversity features and open space – all features Somersford Keynes & Shorncote parish, Gloucestershire



Map produced by Gloucestershire Centre for Environmental Records
v2.0 November 2014
Aerial photography: Infoterra/Environment Agency

Detailed frame 1 - Shorncote

Detailed map frames,
Somerford Keynes & Shorncote parish

Village detail 1: Shorncote

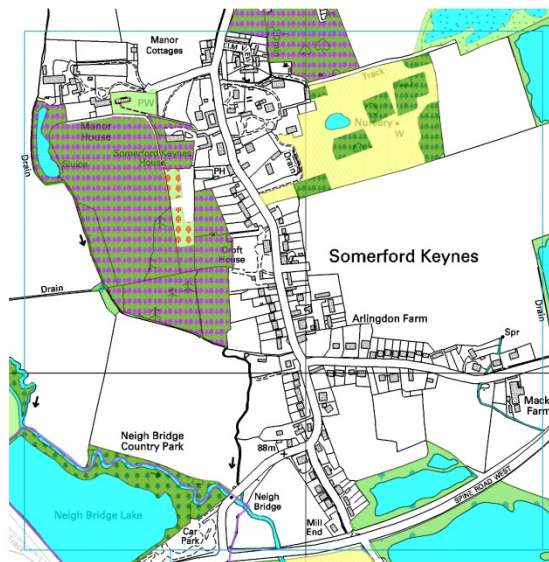


Maps produced by Gloucestershire Centre for Environmental Records
v2.0 November 2014
Aerial photography: Infoterra/Environment Agency
Background maps: Crown Copyright Ordnance Survey 2013

Detailed frame 2 - Somerford Keynes

Detailed map frames,
Somerford Keynes & Shorncote parish

Village detail 2: Somerford Keynes



Maps produced by Gloucestershire Centre for Environmental Records
v2.0 November 2014
Aerial photography: Infoterra/Environment Agency
Background maps: Crown Copyright Ordnance Survey 2013

Detailed frame 3 - Lower Mill Estate

Detailed map frames,
Somerford Keynes & Shornote parish

Village detail 3: Water Park

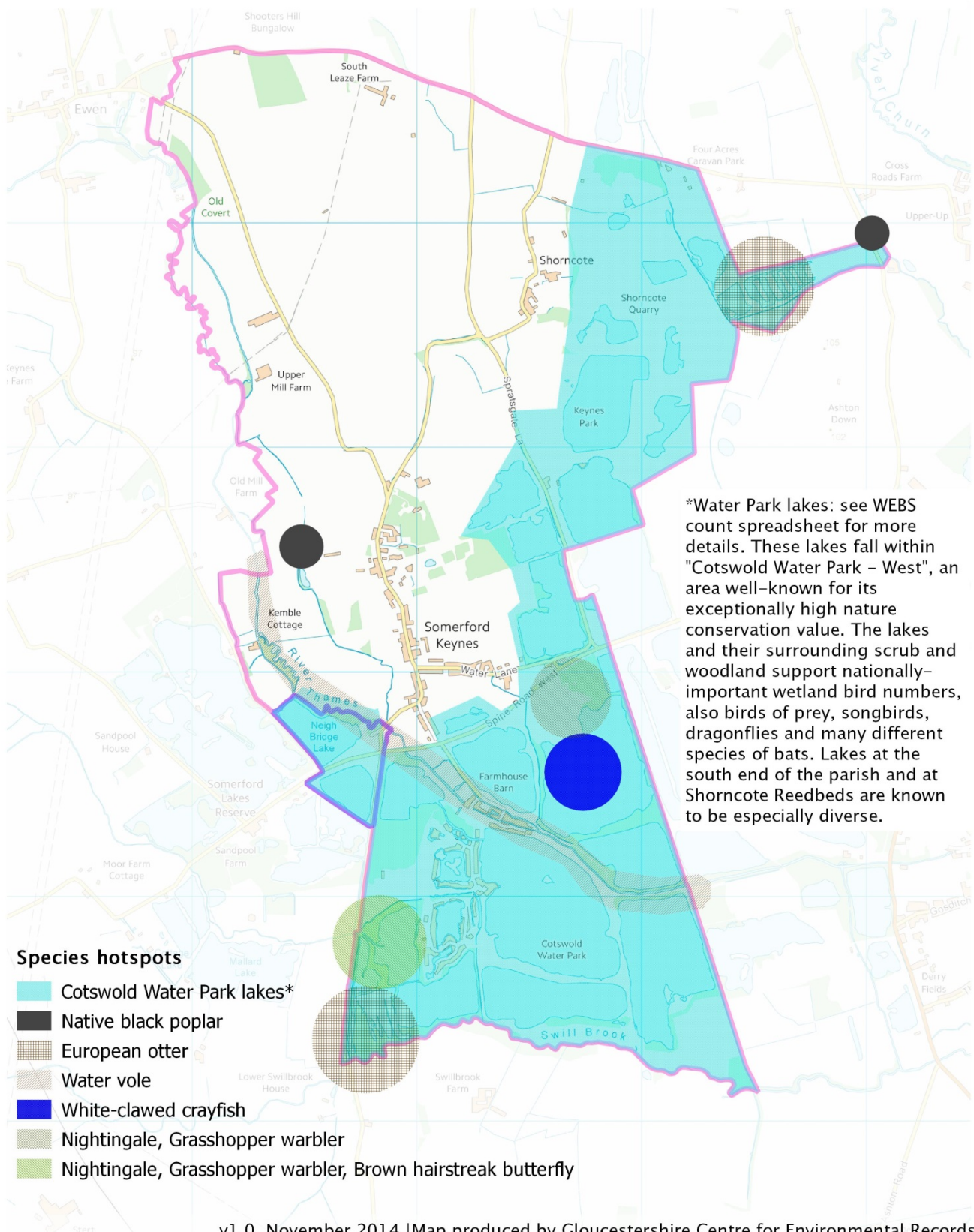


Maps produced by Gloucestershire Centre for Environmental Records
v2.0 November 2014
Aerial photography: Infoterra/Environment Agency
Background maps: Crown Copyright Ordnance Survey 2013

Notable wildlife in Somerford Keynes & Shorncote parish

Key species hotspots

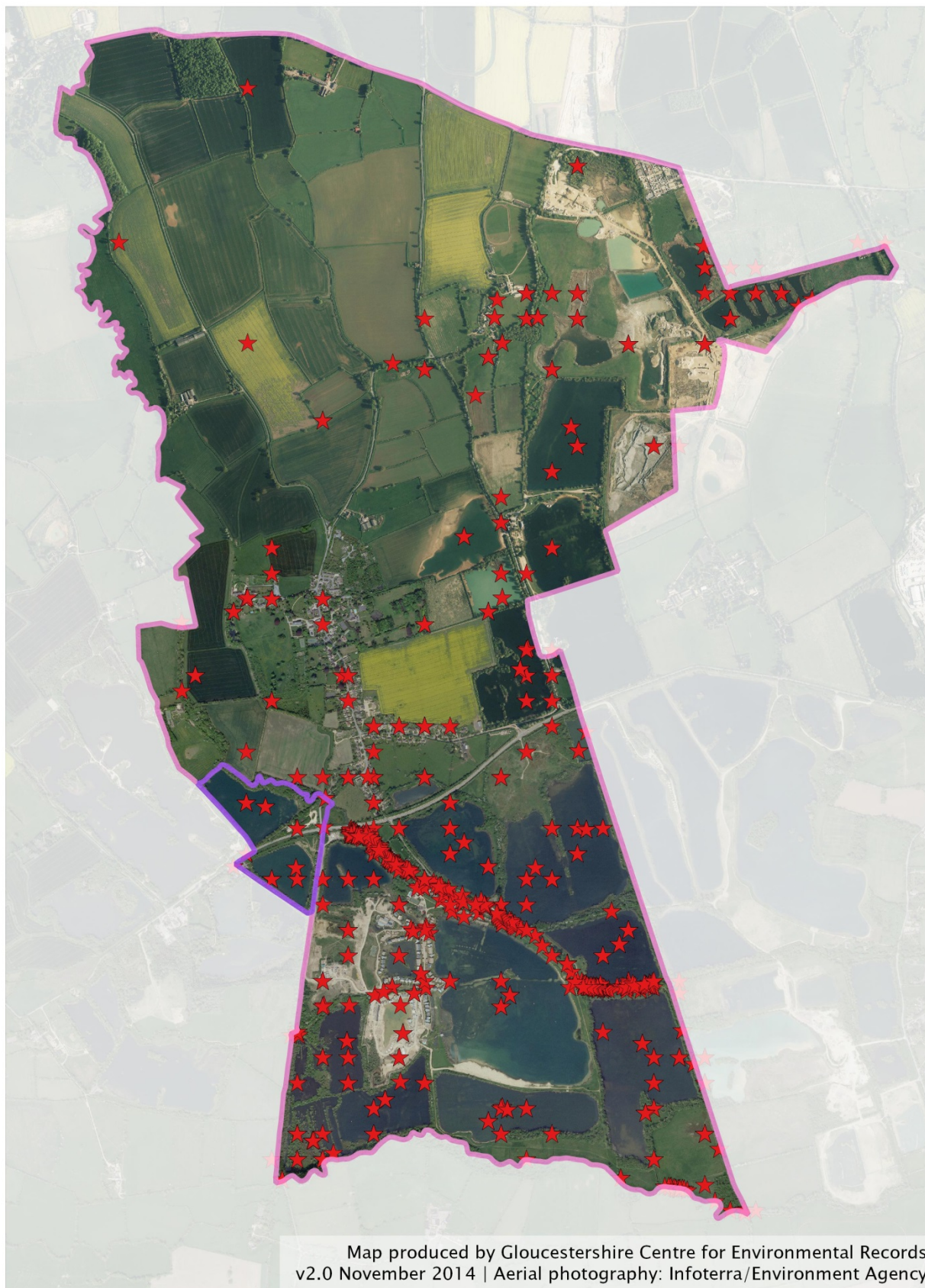
Note: species hotspots are very general and represent high densities of known species records. This may reflect recording levels as much as species abundance, and should not be taken to indicate that the species in question don't also occur elsewhere in the parish.



v1.0 November 2014 | Map produced by Gloucestershire Centre for Environmental Records
Background map: Ordnance Survey OpenData VectorMap District

Distribution of rare and protected species records

Each star represents one or more records of rare or protected species.
Note that some stars are for locations which have many records;
others may just have been a single sighting.



Rare and protected species recorded in Somerford Keynes and Shorncote parish (GCER database Nov 2014)

Taxon group	Scientific name	English name	Grid reference	OS 1km grid square	Year of most recent record *	Location of most recent record	Status	Status type
amphibian	Bufo bufo	Common Toad	SU025935	SU0293	2009	Cotswold Water Park, LME, Pit 58	UK Priority Species 2007, Bern-A3, England NERC S.41, WACA-Sch5_sect9.5a, WACA-Sch5_sect9.5b	International, Nat Legislation, UK BAP
amphibian	Lissotriton vulgaris	Smooth Newt	SU019942	SU0194	2012	Cotswold Water Park	Bern-A3, WACA-Sch5_sect9.5a, WACA-Sch5_sect9.5b	International, Nat Legislation
amphibian	Lissotriton/Triturus	Newt	SU027964	SU0296	2004	Cotswold Water Park Pit 31	Bern-A3, WACA-Sch5_sect9.5a, WACA-Sch5_sect9.5b	International, Nat Legislation
amphibian	Rana temporaria	Common Frog	SU025935	SU0293	2009	Cotswold Water Park, LME, Pit 58	Bern-A3, HabDir-A5, WACA-Sch5_sect9.5a, WACA-Sch5_sect9.5b	International, Nat Legislation
amphibian	Triturus cristatus	Great Crested Newt	SU019942	SU0194	2012	Cotswold Water Park	UK Priority Species 2007, Bern-A2, England NERC S.41, HabDir-A2*, HabDir-A4, HabReg-Sch2, WACA-Sch5_sect9.4b, WACA-Sch5_sect9.5a, WACA-Sch5_sect9.5b, WACA-Sch5Sect9.4c	International, Nat Legislation, UK BAP
bird	Acanthis cabaret	Lesser Redpoll	SU02409459	SU0294	2014	Cotswold Water Park Pit 44	UK Priority Species 2007, Bird-Red, England NERC S.41	Nat Legislation, Red Data List, UK BAP
bird	Actitis hypoleucos	Common Sandpiper	SU02589399	SU0293	2012	CWP pit 57	Bird-Amber	International, Red Data List
bird	Alauda arvensis	Sky Lark	SU0295	SU0295	2012	SU09I, Shorncote	Bird-Red, England NERC S.41	International, Nat Legislation, Red Data List
bird	Alcedo atthis	Common Kingfisher	SU01629473	SU0194	2012	CWP pit 56	Bern-A2, Bird-Amber, BirdsDir-A1, WACA-Sch1_part1	International, Nat Legislation, Red Data List
bird	Anas acuta	Northern Pintail	SU0294	SU0294	2012	CWP pit 43	Bird-Amber, ECCITES-C, WACA-Sch1_part2	International, Nat Legislation, Red Data List
bird	Anas clypeata	Shoveler	SU036967	SU0396	2014	Cotswold Water Park, Shorncote, Pit 85b	Bird-Amber	Red Data List
bird	Anas crecca	Teal	SU036967	SU0396	2014	Cotswold Water Park, Shorncote, Pit 85b	Bird-Amber	Red Data List
bird	Anas platyrhynchos	Mallard	SU01629473	SU0194	2012	CWP pit 56	Bird-Amber	International, Red Data List
bird	Anas querquedula	Garganey	SU028966	SU0296	2013	Cotswold Water Park, Shorncote, Pit 79	Bird-Amber, WACA-Sch1_part1	Nat Legislation, Red Data List
bird	Anas strepera	Gadwall	SU034968	SU0396	2014	Cotswold Water Park, Shorncote, Pit 84	Bird-Amber	Red Data List
bird	Anser anser	Greylag Goose	SU01949381	SU0193	2013	Cotswold Water Park, Pit 46	Bird-Amber	Red Data List
bird	Anthus pratensis	Meadow Pipit	SU01629473	SU0194	2012	CWP pit 56	Bern-A2, Bird-Amber	International, Red Data List
Mapped biodiversity, open space features and wildlife					2012	CWP KWS	Bird-Amber	Nat Legislation,

		Swift				LAKES 46/48 (Swillbrook Lake)		Red Data List
bird	<i>Ardea alba</i>	Great Egret	SU0293	SU0293	2002	CWP pit 57SU0293	Bern-A2	International
bird	<i>Ardea purpurea</i>	Purple Heron	SU0293	SU0293	1997	CWP 57, Lower Mills areaSU0293	Bern-A2, BirdsDir-A1, WACA-Sch1_part1	International, Nat Legislation
bird	<i>Asio flammeus</i>	Short-eared Owl	SU035968	SU0396	2010	Cotswold Water Park, Pit 84/85	Bern-A2, Bird-Amber, BirdsDir-A1	International, Nat Legislation, Red Data List
bird	<i>Athene noctua</i>	Little Owl	SU019936	SU0193	2012	CWP KWS LAKES 46/48 (Swillbrook Lake)	Bern-A2	International
bird	<i>Aythya ferina</i>	Pochard	SU034966	SU0396	2014	Cotswold Water Park, Shorncote, Pit 85a	Bird-Amber	Red Data List
bird	<i>Aythya fuligula</i>	Tufted Duck	SU034966	SU0396	2014	Cotswold Water Park, Shorncote, Pit 85a	Bird-Amber	Red Data List
bird	<i>Aythya marila</i>	Greater Scaup	SU0293	SU0293	2002	CWP pit 57SU0293	UK Priority Species 2007, Bird-Red, England NERC S.41, WACA-Sch1_part1	International, Nat Legislation, Red Data List, UK BAP
bird	<i>Botaurus stellaris</i>	Great Bittern	SU034967	SU0396	2012	CWP pit 84/85	UK Priority Species 2007, Bern-A2, Bird-Red, BirdsDir-A1, England NERC S.41, WACA-Sch1_part1	International, Nat Legislation, Red Data List, UK BAP
bird	<i>Branta leucopsis</i>	Barnacle Goose	SU0293	SU0293	2003	CWP pit 57SU0293	Bern-A2, Bird-Amber, BirdsDir-A1	International, Nat Legislation, Red Data List
bird	<i>Bucephala clangula</i>	Common Goldeneye	SU02589399	SU0293	2012	CWP pit 57	Bird-Amber, WACA-Sch1_part2	International, Nat Legislation, Red Data List
bird	<i>Calidris alpina</i>	Dunlin	SU02409579	SU0295	2011	CWP pit 91	Bern-A2, Bird-Red	International, Red Data List
bird	<i>Calidris canutus</i>	Red Knot	SU034967	SU0396	2012	CWP pit 84/85	Bird-Amber	International, Red Data List
bird	<i>Carduelis cabaret</i>	Lesser Redpoll	SU01629473	SU0194	2012	CWP pit 56	UK Priority Species 2007, Bird-Red, England NERC S.41	Nat Legislation, Red Data List, UK BAP
bird	<i>Carduelis cannabina</i>	Common Linnet	SU019944	SU0194	2012	CWP pit 77	Bern-A2, Bird-Red	International, Nat Legislation, Red Data List
bird	<i>Carduelis carduelis</i>	European Goldfinch	SU0194	SU0194	2012	CWP pit 51	Bern-A2	International
bird	<i>Carduelis chloris</i>	European Greenfinch	SU0294	SU0294	2012	CWP pit 43/65	Bern-A2	International
bird	<i>Carduelis flammea</i>	Common Redpoll	SU026953	SU0295	1989	COKES PIT	Bern-A2	International
bird	<i>Carduelis spinus</i>	Eurasian Siskin	SU01629473	SU0194	2012	CWP pit 56	Bern-A2	International, Nat Legislation
bird	<i>Certhia familiaris</i>	Eurasian Treecreeper	SU019936	SU0193	2012	CWP KWS LAKES 46/48 (Swillbrook Lake)	Bern-A2	International
bird	<i>Cettia cetti</i>	Cetti's Warbler	SU034968	SU0396	2014	Cotswold Water Park, Shorncote, Pit 84	WACA-Sch1_part1	Nat Legislation
bird	<i>Charadrius dubius</i>	Little Plover	SU028966	SU0296	2012	CWP pit 79	Bern-A2, Bird-Amber, WACA-Sch1_part1	International, Nat Legislation, Red Data List

bird	<i>Charadrius hiaticula</i>	Ringed Plover	SU02409579	SU0295	2011	CWP pit 91	Bern-A2	International
bird	<i>Chlidonias leucopterus</i>	White-winged Tern	SU0295	SU0295	1998	CWP pit 32SU0295	Bern-A2	International
bird	<i>Chlidonias niger</i>	Black Tern	SU02589399	SU0293	2011	CWP pit 57	Bern-A2, Bird-Amber, BirdsDir-A1, WACA-Sch1_part1	International, Nat Legislation, Red Data List
bird	<i>Chroicocephalus ridibundus</i>	Black-headed Gull	SU01629473	SU0194	2012	CWP pit 56	Bird-Amber	International, Nat Legislation, Red Data List
bird	<i>Columba oenas</i>	Stock Dove	SU028966	SU0296	2013	Cotswold Water Park, Shorncote, Pit 79	Bird-Amber	Red Data List
bird	<i>Coturnix coturnix</i>	Common Quail	SU034967	SU0396	2012	CWP pit 84/85	Bird-Amber, WACA-Sch1_part1	International, Nat Legislation, Red Data List
bird	<i>Cuculus canorus</i>	Common Cuckoo	SU019936	SU0193	2012	CWP KWS LAKES 46/48 (Swillbrook Lake)	UK Priority Species 2007, Bird-Red, England NERC S.41	Nat Legislation, Red Data List, UK BAP
bird	<i>Cyanistes caeruleus</i>	Blue Tit	SU0194	SU0194	2012	CWP pit 51	Bern-A2	International
bird	<i>Cygnus columbianus</i>	Tundra Swan	SU0293	SU09	2011	CWP pit 57SU0293	Bern-A2, Bird-Amber, BirdsDir-A1, WACA-Sch1_part1	International, Nat Legislation, Red Data List
bird	<i>Delichon urbicum</i>	House Martin	SU019936	SU0193	2012	CWP KWS LAKES 46/48 (Swillbrook Lake)	Bern-A2, Bird-Amber	International, Red Data List
bird	<i>Dendrocopos major</i>	Great Spotted Woodpecker	SU01749449	SU0194	2012	CWP pit 63	Bern-A2	International
bird	<i>Egretta garzetta</i>	Little Egret	SU036967	SU0396	2014	Cotswold Water Park, Shorncote, Pit 85b	Bern-A2, Bird-Amber, BirdsDir-A1	International, Red Data List
bird	<i>Emberiza calandra</i>	Corn Bunting	SU0296	SU09	1993	CWP pit 31SU0296	Bird-Red	Nat Legislation, Red Data List
bird	<i>Emberiza citrinella</i>	Yellowhammer	SU034967	SU0396	2012	CWP pit 84/85	UK Priority Species 2007, Bern-A2, Bird-Red, England NERC S.41	International, Nat Legislation, Red Data List, UK BAP
bird	<i>Emberiza schoeniclus</i>	Reed Bunting	SU019936	SU0193	2012	CWP KWS LAKES 46/48 (Swillbrook Lake)	UK Priority Species 2007, Bern-A2, Bird-Amber, England NERC S.41	International, Nat Legislation, Red Data List, UK BAP
bird	<i>Erithacus rubecula</i>	European Robin	SU01629473	SU0194	2012	CWP pit 56	Bern-A2	International, Nat Legislation
bird	<i>Falco peregrinus</i>	Peregrine Falcon	SU034967	SU0396	2012	CWP pit 84/85	Bern-A2, BirdsDir-A1, WACA-Sch1_part1	International, Nat Legislation
bird	<i>Falco subbuteo</i>	Eurasian Hobby	SU019936	SU0193	2012	CWP KWS LAKES 46/48 (Swillbrook Lake)	Bern-A2, WACA-Sch1_part1	International, Nat Legislation
bird	<i>Falco tinnunculus</i>	Common Kestrel	SU02889464	SU0294	2012	CWP pit 43	Bern-A2, Bird-Amber	International, Nat Legislation, Red Data List
bird	<i>Ficedula hypoleuca</i>	Pied Flycatcher	SU03109380	SU0393	2013	Cotswold Water Park, LME, Pit 41	Bird-Amber	Red Data List
bird	<i>Gallinago gallinago</i>	Snipe	SU034968	SU0396	2014	Cotswold Water Park, Shorncote, Pit 84	Bird-Amber	Red Data List
bird	<i>Gavia stellata</i>	Red-	SU0296	SU0296	2003	CWP pit	Bern-A2, Bird-Amber,	International,

		throated Diver				31SU0296	BirdsDir-A1, WACA-Sch1_part1	Nat Legislation, Red Data List
bird	Haematopus ostralegus	Eurasian Oystercatcher	SU01629473	SU0194	2012	CWP pit 56	Bird-Amber	International, Red Data List
bird	Hirundo rustica	Barn Swallow	SU02589399	SU0293	2012	CWP pit 57	Bern-A2, Bird-Amber	International, Red Data List
bird	Larus argentatus	Herring Gull	SU02889464	SU0294	2012	CWP pit 43	Bird-Red	International, Nat Legislation, Red Data List
bird	Larus canus	Common Gull	SU034966	SU0396	2013	Cotswold Water Park Pit 85a/85b	Bird-Amber	Red Data List
bird	Larus canus subsp. canus	Larus canus subsp. canus	SU02409459	SU0294	2010	Cotswold Water Park Pit 44	Bird-Amber	International, Red Data List
bird	Larus fuscus	Lesser Black-backed Gull	SU0293	SU0293	2012	CWP KWS LAKES 46/48 (Swillbrook Lake)	Bird-Amber	International, Red Data List
bird	Larus marinus	Great Black-backed Gull	SU035968	SU0396	2005	Cotswold Water Park, Pit 84/85	Bird-Amber	International, Red Data List
bird	Larus melanocephalus	Mediterranean Gull	SU0293	SU0293	2004	CWP pit 57	Bern-A2, Bird-Amber, BirdsDir-A1, WACA-Sch1_part1	International, Nat Legislation, Red Data List
bird	Larus michahellis	Yellow-legged Gull	SU02409459	SU0294	2012	Cotswold Water Park Pit 44	Bird-Amber	Red Data List
bird	Larus ridibundus	Black-headed Gull	SU0293	SU09	2011	CWP pit 57SU0293	Bird-Amber	International, Nat Legislation, Red Data List
bird	Limosa limosa	Black-tailed Godwit	SU028966	SU0296	2012	CWP pit 79	Bird-Red, RedList_Near Threatened, WACA-Sch1_part1	International, Nat Legislation, Red Data List
bird	Linaria cannabina	Linnet	SU0294	SU0294	2011	CWP pit 43/65	Bern-A2, Bird-Red	International, Red Data List
bird	Locustella naevia	Common Grasshopper Warbler	SU02889464	SU0294	2012	CWP pit 43	UK Priority Species 2007, Bird-Red, England NERC S.41	Nat Legislation, Red Data List, UK BAP
bird	Loxia curvirostra	Common Crossbill	SU0293	SU0293	2011	CWP pit 48	Bern-A2, WACA-Sch1_part1	International, Nat Legislation
bird	Luscinia megarhynchos	Common Nightingale	SU017938	SU0193	2012	CWP KWS LAKES 46/48 (Swillbrook Lake)	Bern-A2, Bird-Amber	International, Red Data List
bird	Lymnocyptes minimus	Jack Snipe	SU0296	SU0296	2012	CWP pit 79	Bird-Amber	International, Red Data List
bird	Mergellus albellus	Smew	SU0294	SU0294	2012	CWP pit 43	Bern-A2, Bird-Amber, BirdsDir-A1	International, Nat Legislation, Red Data List
bird	Milvus milvus	Red Kite	SU02589399	SU0293	2012	CWP pit 57	Bird-Amber, BirdsDir-A1, RedList_Near Threatened, WACA-Sch1_part1	International, Nat Legislation, Red Data List
bird	Morus bassanus	Northern Gannet	SU0293	SU0293	2002	CWP pit 58SU0293	Bird-Amber	International, Red Data List
bird	Motacilla alba subsp. yarrellii	Pied Wagtail	SU034966	SU0396	2014	Cotswold Water Park, Shorncote, Pit 85a	Bern-A2	International
bird	Motacilla cinerea	Grey Wagtail	SU0293	SU0293	2012	CWP pit 57	Bern-A2, Bird-Amber	International, Red Data List
bird	Motacilla flava subsp. flavissima	Yellow Wagtail	SU02409459	SU0294	2011	Cotswold Water Park Pit 44	UK Priority Species 2007, Bern-A2, Bird-Red, England NERC S.41	International, Nat Legislation, Red Data List, UK BAP

bird	<i>Muscicapa striata</i>	Spotted Flycatcher	SU019936	SU0193	2011	CWP KWS LAKES 46/48 (Swillbrook Lake)	UK Priority Species 2007, Bern-A2, Bird-Red, England NERC S.41	International, Nat Legislation, Red Data List, UK BAP
bird	<i>Numenius arquata</i>	Eurasian Curlew	SU0293	SU0293	2012	CWP pit 57	UK Priority Species 2007, Bird-Amber, England NERC S.41, RedList_Near Threatened	International, Nat Legislation, Red Data List, UK BAP
bird	<i>Numenius phaeopus</i>	Whimbrel	SU019936	SU0193	2011	CWP KWS LAKES 46/48 (Swillbrook Lake)	Bird-Red, WACA-Sch1_part1	Nat Legislation, Red Data List
bird	<i>Oceanodroma leucorhoa</i>	Leach's Storm-petrel	SU0296	SU0296	1989	CWP pit 31SU0296	Bern-A2, Bird-Amber, BirdsDir-A1, WACA-Sch1_part1	International, Nat Legislation, Red Data List
bird	<i>Oenanthe oenanthe</i>	Northern Wheatear	SU0296	SU0296	2012	SU091, Shorncote	Bern-A2, Bird-Amber	International, Red Data List
bird	<i>Pandion haliaetus</i>	Osprey	SU035968	SU0396	2005	Cotswold Water Park, Pit 84/85	Bird-Amber, BirdsDir-A1, WACA-Sch1_part1	International, Nat Legislation, Red Data List
bird	<i>Panurus biarmicus</i>	Bearded Tit	SU0295	SU0295	2003	CWP pit 34SU0295	Bern-A2, Bird-Amber, WACA-Sch1_part1	International, Nat Legislation, Red Data List
bird	<i>Parus major</i>	Great Tit	SU01629473	SU0194	2012	CWP pit 56	Bern-A2	International
bird	<i>Passer domesticus</i>	House Sparrow	SU022944	SU0294	2011	CWP 57, Lower Mills area	UK Priority Species 2007, Bird-Red, England NERC S.41	Nat Legislation, Red Data List, UK BAP
bird	<i>Passer montanus</i>	Eurasian Tree Sparrow	SU0194	SU0194	1990	CWP WestSU0194	UK Priority Species 2007, Bird-Red, England NERC S.41	Nat Legislation, Red Data List, UK BAP
bird	<i>Perdix perdix</i>	Grey Partridge	SU034967	SU0396	2012	CWP pit 84/85	UK Priority Species 2007, Bird-Red, England NERC S.41	International, Nat Legislation, Red Data List, UK BAP
bird	<i>Periparus ater</i>	Coal Tit	SU02099358	SU0293	2013	Cotswold Water Park, Pit 48	Bern-A2	International
bird	<i>Phalacrocorax aristotelis</i>	European Shag	SU0294	SU0294	1989	CWP pit 43SU0294	Bern-A2, Bird-Amber	International, Red Data List
bird	<i>Philomachus pugnax</i>	Ruff	SU034967	SU0396	2012	CWP pit 84/85	Bird-Red, BirdsDir-A1, WACA-Sch1_part1	International, Nat Legislation, Red Data List
bird	<i>Phylloscopus trochilus</i>	Willow Warbler	SU019936	SU0193	2012	CWP KWS LAKES 46/48 (Swillbrook Lake)	Bird-Amber	Red Data List
bird	<i>Picus viridis</i>	Green Woodpecker	SU019936	SU0193	2012	CWP KWS LAKES 46/48 (Swillbrook Lake)	Bern-A2, Bird-Amber	International, Red Data List
bird	<i>Platalea leucorodia</i>	Eurasian Spoonbill	SU0293	SU09	1992	CWP pit 57SU0293	Bern-A2, Bird-Amber, BirdsDir-A1, WACA-Sch1_part1	International, Nat Legislation, Red Data List
bird	<i>Pluvialis apricaria</i>	European Golden Plover	SU0294	SU0294	2012	CWP pit 43	Bird-Amber, BirdsDir-A1	International, Nat Legislation, Red Data List
bird	<i>Podiceps auritus</i>	Slavonian Grebe	SU0194	SU09	1994	CWP pit 63SU0194	Bern-A2, Bird-Amber, BirdsDir-A1, WACA-Sch1_part1	International, Nat Legislation, Red Data List
bird	<i>Podiceps grisegena</i>	Red-necked Grebe	SU0293	SU0293	1999	CWP pit 57SU0293	Bird-Amber	Red Data List
bird	<i>Podiceps nigricollis</i>	Black-necked Grebe	SU0293	SU0293	2003	CWP pit 57SU0293	Bern-A2, Bird-Amber, WACA-Sch1_part1	International, Nat Legislation, Red Data List
bird	<i>Poecile palustris</i>	Marsh Tit	SU0194	SU0194	2012	CWP pit 51	Bern-A2, Bird-Red	International, Red Data List

bird	<i>Prunella modularis</i>	Dunnock	SU034968	SU0396	2014	Cotswold Water Park, Shorncote, Pit 84	Bern-A2, Bird-Amber	International, Red Data List
bird	<i>Pyrrhula pyrrhula</i>	Common Bullfinch	SU019936	SU0193	2012	CWP KWS LAKES 46/48 (Swillbrook Lake)	Bird-Amber	Nat Legislation, Red Data List
bird	<i>Regulus regulus</i>	Goldcrest	SU019936	SU0193	2012	CWP KWS LAKES 46/48 (Swillbrook Lake)	Bern-A2	International
bird	<i>Riparia riparia</i>	Sand Martin	SU01629473	SU0194	2012	CWP pit 56	Bern-A2, Bird-Amber	International, Red Data List
bird	<i>Saxicola rubetra</i>	Whinchat	SU034967	SU0396	2011	CWP pit 84/85	Bern-A2, Bird-Amber	International, Red Data List
bird	<i>Saxicola rubicola</i>	Stonechat	SU036967	SU0396	2014	Cotswold Water Park, Shorncote, Pit 85b	Bern-A2	International
bird	<i>Scolopax rusticola</i>	Eurasian Woodcock	SU0294	SU0294	2012	CWP pit 43/65	Bird-Amber	International, Nat Legislation, Red Data List
bird	<i>Sitta europaea</i>	Nuthatch	SU020949	SU0294	2011	SU 09H, Keynes Country Park	Bern-A2	International
bird	<i>Spinus spinus</i>	Siskin	SU0293	SU0293	2011	CWP pit 58	Bern-A2	International
bird	<i>Sterna dougallii</i>	Roseate Tern	SU0295	SU0295	1989	CWP pit 32SU0295	UK Priority Species 2007, Bern-A2, Bird-Red, BirdsDir-A1, England NERC S.41, WACA-Sch1_part1	International, Nat Legislation, Red Data List, UK BAP
bird	<i>Sterna hirundo</i>	Common Tern	SU01629473	SU0194	2012	CWP pit 56	Bern-A2, Bird-Amber, BirdsDir-A1	International, Nat Legislation, Red Data List
bird	<i>Sterna paradisaea</i>	Arctic Tern	SU026953	SU0295	1990	COKES PIT	Bern-A2, Bird-Amber, BirdsDir-A1	International, Nat Legislation, Red Data List
bird	<i>Sternula albifrons</i>	Little Tern	SU0293	SU0293	1989	CWP pit 57SU0293	Bern-A2, Bird-Amber, BirdsDir-A1, WACA-Sch1_part1	International, Nat Legislation, Red Data List
bird	<i>Streptopelia turtur</i>	European Turtle Dove	SU0294	SU09	1992	Somerford KeynesSU0294	UK Priority Species 2007, Bird-Red, England NERC S.41	International, Nat Legislation, Red Data List, UK BAP
bird	<i>Strix aluco</i>	Tawny Owl	SU019936	SU0193	2012	CWP KWS LAKES 46/48 (Swillbrook Lake)	Bern-A2	International
bird	<i>Sturnus vulgaris</i>	Common Starling	SU0296	SU0296	2012	SU09I, Shorncote	Bird-Red	International, Red Data List
bird	<i>Sylvia communis</i>	Common Whitethroat	SU02579354	SU0293	2012	CWP pit 58	Bird-Amber	Red Data List
bird	<i>Tachybaptus ruficollis</i>	Little Grebe	SU036967	SU0396	2014	Cotswold Water Park, Shorncote, Pit 85b	Bird-Amber	Red Data List
bird	<i>Tadorna tadorna</i>	Common Shelduck	SU028966	SU0296	2012	CWP pit 79	Bern-A2	International
bird	<i>Tringa glareola</i>	Wood Sandpiper	SU035968	SU0396	2010	Cotswold Water Park, Pit 84/85	Bern-A2, Bird-Amber, BirdsDir-A1, WACA-Sch1_part1	International, Nat Legislation, Red Data List
bird	<i>Tringa nebularia</i>	Common Greenshank	SU028966	SU0296	2012	CWP pit 79	BirdsDir-A2.2, WACA-Sch1_part1	International, Nat Legislation
bird	<i>Tringa ochropus</i>	Green Sandpiper	SU036967	SU0396	2014	Cotswold Water Park, Shorncote, Pit	Bern-A2, Bird-Amber, WACA-Sch1_part1	International, Nat Legislation, Red Data List

						85b		
bird	Tringa totanus	Common Redshank	SU028966	SU0296	2012	CWP pit 79	Bird-Amber	International, Red Data List
bird	Troglodytes troglodytes	Winter Wren	SU01629473	SU0194	2012	CWP pit 56	Bern-A2	International
bird	Turdus iliacus	Redwing	SU01629473	SU0194	2012	CWP pit 56	Bird-Red, WACA-Sch1_part1	International, Nat Legislation, Red Data List
bird	Turdus philomelos	Song Thrush	SU01629473	SU0194	2012	CWP pit 56	Bird-Red	International, Nat Legislation, Red Data List
bird	Turdus pilaris	Fieldfare	SU022964	SU0296	2012	Shorncote	Bird-Red, WACA-Sch1_part1	International, Nat Legislation, Red Data List
bird	Turdus viscivorus	Mistle Thrush	SU0296	SU0296	2012	SU091, Shorncote	Bird-Amber	International, Red Data List
bird	Tyto alba	Barn Owl	SU034967	SU0396	2011	CWP pit 84/85	Bern-A2, Bird-Amber, WACA-Sch1_part1	International, Nat Legislation, Red Data List
bird	Vanellus vanellus	Northern Lapwing	SU028966	SU0296	2012	CWP pit 79	UK Priority Species 2007, Bird-Red, England NERC S.41	International, Nat Legislation, Red Data List, UK BAP
crustacean	Austropotamobius pallipes	Freshwater Crayfish	SU029946	SU0294	1999	Lake 43	UK Priority Species 2007, Bern-A3, England NERC S.41, HabDir-A2*, HabDir-A5, RedList_Endangered, WACA-Sch5_sect9.1(taking), WACA-Sch5_sect9.5a, WACA-Sch5_sect9.5b	International, Nat Legislation, Red Data List, UK BAP
flowering plant	Helleborus foetidus	Stinking Hellebore	SU02129647	SU0296	2004	Shorncote	Nationally Scarce	Other rare/scarce
flowering plant	Hyacinthoides non-scripta	Bluebell	SU0195	SU0195	2007	Old Mill Farm	WACA-Sch8	Nat Legislation
flowering plant	Onobrychis viciifolia	Sainfoin	SU026956	SU0295	2009	Spratsgate Lane, Somerford Keynes CRV	RedList_Near Threatened	Red Data List
flowering plant	Populus nigra subsp. betulifolia	Black Poplar	SU0405796946	SU0496	2010	Upper Up	Key Glos Species	Other rare/scarce
insect - beetle (Coleoptera)	Gymnetron veronicae	Brooklime Gull Weevil	SU034967	SU0396	2010	Cotswold Water Park, Shorncote, Pit 85a	Notable-B	Other rare/scarce
insect - beetle (Coleoptera)	Hygrotus (Coelambus) nigrolineatus	a beetle	SU034966	SU0396	2010	Cotswold Water Park, Shorncote, Pit 85a	Nationally Scarce	Other rare/scarce
insect - butterfly	Coenonympha pamphilus	Small Heath	SU018939	SU0193	1997		UK Priority Species 2007, England NERC S.41, Near Threatened	Nat Legislation, Red Data List, UK BAP
insect - butterfly	Cupido minimus	Small Blue	SU026953	SU0295	1989	COKES PIT	UK Priority Species 2007, England NERC S.41, Near Threatened, WACA-Sch5_sect9.5a, WACA-Sch5_sect9.5b	Nat Legislation, Red Data List, UK BAP
insect - butterfly	Lasiommata megera	Wall	SU026953	SU0295	1990	COKES PIT	UK Priority Species 2007, England NERC S.41, Near Threatened	Nat Legislation, Red Data List, UK BAP
insect - butterfly	Pyrgus malvae	Grizzled Skipper	SU018946	SU0194	1997		UK Priority Species 2007, England NERC S.41, Vulnerable	Nat Legislation, Red Data List, UK BAP
insect - butterfly	Thecla betulae	Brown Hairstreak	SU019939	SU0193	1997		UK Priority Species 2007, England NERC S.41, Vulnerable, WACA-	Nat Legislation, Red Data List, UK BAP

							Sch5_sect9.5a, WACA-Sch5_sect9.5b	
insect – moth	Acronicta psi	Grey Dagger	SU017934	SU0193	2008	Swillbrook Lakes	UK Priority Species 2007, England NERC S.41	Nat Legislation, UK BAP
insect – moth	Acronicta rumicis	Knotgrass	SU0296	SU0296	2003	Lake 31, Keynes Country Park	UK Priority Species 2007, England NERC S.41	Nat Legislation, UK BAP
insect – moth	Amphipoea oculea	Ear Moth	SU017934	SU0193	2008	Swillbrook Lakes	UK Priority Species 2007, England NERC S.41	Nat Legislation, UK BAP
insect – moth	Brachyloimia viminalis	Minor Shoulder-knot	SU017934	SU0193	2008	Swillbrook Lakes	UK Priority Species 2007, England NERC S.41	Nat Legislation, UK BAP
insect – moth	Calamotropha paludella	Bulrush Veneer	SU017934	SU0193	2008	Swillbrook Lakes	Notable-B	Other rare/scarce
insect – moth	Diarsia rubi	Small Square-spot	SU017934	SU0193	2008	Swillbrook Lakes	UK Priority Species 2007, England NERC S.41	Nat Legislation, UK BAP
insect – moth	Ecliptopera silaceata	Small Phoenix	SU017934	SU0193	2008	Swillbrook Lakes	UK Priority Species 2007, England NERC S.41	Nat Legislation, UK BAP
insect – moth	Ennomos erosaria	September Thorn	SU017934	SU0193	2008	Swillbrook Lakes	UK Priority Species 2007, England NERC S.41	Nat Legislation, UK BAP
insect – moth	Ennomos fuscantaria	Dusky Thorn	SU017934	SU0193	2008	Swillbrook Lakes	UK Priority Species 2007, England NERC S.41	Nat Legislation, UK BAP
insect – moth	Graphiphora augur	Double Dart	SU017934	SU0193	2008	Swillbrook Lakes	UK Priority Species 2007, England NERC S.41	Nat Legislation, UK BAP
insect – moth	Hemistola chrysoprasaria	Small Emerald	SU017934	SU0193	2008	Swillbrook Lakes	UK Priority Species 2007, England NERC S.41	Nat Legislation, UK BAP
insect – moth	Hoplodrina blanda	Rustic	SU017934	SU0193	2008	Swillbrook Lakes	UK Priority Species 2007, England NERC S.41	Nat Legislation, UK BAP
insect – moth	Hydraecia micacea	Rosy Rustic	SU0296	SU0296	2003	Lake 31, Keynes Country Park	UK Priority Species 2007, England NERC S.41	Nat Legislation, UK BAP
insect – moth	Malacosoma neustria	Lackey	SU017934	SU0193	2008	Swillbrook Lakes	UK Priority Species 2007, England NERC S.41	Nat Legislation, UK BAP
insect – moth	Schoenobius gigantella	Giant Water-veneer	SU017934	SU0193	2008	Swillbrook Lakes	Notable-B	Other rare/scarce
insect – moth	Scotopteryx chenopodiata	Shaded Broad-bar	SU017934	SU0193	2008	Swillbrook Lakes	UK Priority Species 2007, England NERC S.41	Nat Legislation, UK BAP
insect – moth	Spilosoma lubricipeda	White Ermine	SU017934	SU0193	2008	Swillbrook Lakes	UK Priority Species 2007, England NERC S.41	Nat Legislation, UK BAP
insect – moth	Spilosoma luteum	Buff Ermine	SU017934	SU0193	2008	Swillbrook Lakes	UK Priority Species 2007, England NERC S.41	Nat Legislation, UK BAP
insect – moth	Timandra griseata	Blood-vein	SU0296	SU0296	2003	Lake 31, Keynes Country Park	UK Priority Species 2007, England NERC S.41	Nat Legislation, UK BAP
insect – moth	Tyria jacobaeae	Cinnabar	SU017934	SU0193	2008	Swillbrook Lakes	UK Priority Species 2007, England NERC S.41	Nat Legislation, UK BAP
insect – moth	Watsonalla binaria	Oak Hook-tip	SU017934	SU0193	2008	Swillbrook Lakes	UK Priority Species 2007, England NERC S.41	Nat Legislation, UK BAP
insect – true fly (Diptera)	Volucella inanis	a true fly	SU026944	SU0294	2009	Lower Mill	Notable	Other rare/scarce
mollusc	Helix (Helix) pomatia	Roman Snail	SU018944	SU0194	2005	COTSWOLD WATER PARK COMPOSITE SITE	Bern-A3, HabDir-A5, WACA-Sch5_sect9.1 (kill/injuring), WACA-Sch5_sect9.1 (taking), WACA-Sch5_sect9.2, WACA-Sch5_sect9.5a, WACA-Sch5_sect9.5b	International, Nat Legislation
reptile	Anguis fragilis	Slow-worm	SU018943	SU0194	2009	Netherwood CRV	UK Priority Species 2007, Bern-A3, England NERC S.41, WACA-Sch5_sect9.1 (kill/injuring), WACA-Sch5_sect9.5a, WACA-Sch5_sect9.5b	International, Nat Legislation, UK BAP
reptile	Natrix natrix	Grass Snake	SU019936	SU0193	2012	Swillbrook Lakes Reserve (CWP)	UK Priority Species 2007, Bern-A3, England NERC S.41, WACA-	International, Nat Legislation, UK BAP

						46/48)SU0199 36	Sch5_sect9.1(kill/injuring), WACA-Sch5_sect9.5a, WACA- Sch5_sect9.5b	
reptile	Vipera berus	Adder	SU02629527	SU0295	2009	Cotswold Water Park Pit 34	UK Priority Species 2007, Bern-A3, England NERC S.41, WACA- Sch5_sect9.1(kill/injuring), WACA-Sch5_sect9.5a, WACA- Sch5_sect9.5b	International, Nat Legislation, UK BAP
reptile	Zootoca vivipara	Common Lizard	SU036967	SU0396	2011	Cotswold Water Park, Shorncote, Pit 85b	UK Priority Species 2007, Bern-A3, England NERC S.41, WACA- Sch5_sect9.1(kill/injuring), WACA-Sch5_sect9.5a, WACA- Sch5_sect9.5b	International, Nat Legislation, UK BAP
terrestrial mammal	Arvicola amphibius	European Water Vole	SU010969	SU0196	2012	River Thames bankside, Ewen	UK Priority Species 2007, England NERC S.41, WACA- Sch5_sect9.1(kill/injuring), WACA-Sch5_sect9.1(taking), WACA-Sch5_sect9.2, WACA- Sch5_sect9.4a, WACA- Sch5_sect9.4b, WACA- Sch5_sect9.5a, WACA- Sch5_sect9.5b, WACA- Sch5sect9.4c	Nat Legislation, UK BAP
terrestrial mammal	Chiroptera	Bats (unspecified)	SU016933	SU0193	2013	Swillbrook Bridge, Minety	HabDir-A4	International
terrestrial mammal	Eptesicus serotinus	Serotine	SU03109380	SU0393	2011	Cotswold Water Park, LME, Pit 41	Bern-A2, HabDir-A4, HabReg-Sch2, WACA- Sch5_sect9.4b, WACA- Sch5_sect9.5a, WACA- Sch5_sect9.5b, WACA- Sch5sect9.4c	International, Nat Legislation
terrestrial mammal	Erinaceus europaeus	West European Hedgehog	SU023943	SU0294	2012	Cotswold Water Park, LME, Pit 57	UK Priority Species 2007, Bern-A3, England NERC S.41	International, Nat Legislation, UK BAP
terrestrial mammal	Lepus europaeus	Brown Hare	SU0295	SU0295	2006	COTSWOLD WATER PARK COMPOSITE SITE	UK Priority Species 2007, England NERC S.41	Nat Legislation, UK BAP
terrestrial mammal	Lutra lutra	European Otter	SU019936	SU0193	2011	Swillbrook Lakes Reserve (CWP 46/48)	UK Priority Species 2007, Bern-A2, England NERC S.41, HabDir-A2*, HabDir-A4, HabReg-Sch2, RedList_Global_Near Threatened, WACA- Sch5_sect9.4b, WACA- Sch5_sect9.5a, WACA- Sch5_sect9.5b, WACA- Sch5sect9.4c	International, Nat Legislation, Red Data List, UK BAP
terrestrial mammal	Meles meles	Eurasian Badger	SU019936	SU0193	2012	Swillbrook Lakes Reserve (CWP 46/48)	Bern-A3, Protection of Badgers Act (1992)	International, Nat Legislation
terrestrial mammal	Micromys minutus	Harvest Mouse	SU02629527	SU0295	2006	Cotswold Water Park Pit 34	UK Priority Species 2007, England NERC S.41	Nat Legislation, UK BAP
terrestrial mammal	Mustela putorius	Polecat	SU01949381	SU0193	2013	Cotswold Water Park, Pit 46	UK Priority Species 2007, England NERC S.41, HabDir- A5, HabReg-Sch4	International, Nat Legislation, UK BAP
terrestrial mammal	Myotis	Unidentified Bat	SU03109380	SU0393	2011	Cotswold Water Park, LME, Pit 41	HabDir-A4, HabReg-Sch2, WACA-Sch5_sect9.4b, WACA- Sch5_sect9.5a, WACA- Sch5_sect9.5b, WACA- Sch5sect9.4c	International, Nat Legislation
terrestrial mammal	Myotis brandtii	Brandt's Bat	SU033936	SU0393	2013	Cotswold Water Park, LME, Pit 41	Bern-A2, HabDir-A4, HabReg-Sch2, WACA- Sch5_sect9.4b, WACA-	International, Nat Legislation

							Sch5_sect9.5a, WACA-Sch5_sect9.5b, WACA-Sch5Sect9.4c	
terrestrial mammal	Myotis daubentonii	Daubenton's Bat	SU02629527	SU0295	2010	Cotswold Water Park Pit 34	Bern-A2, HabDir-A4, HabReg-Sch2, WACA-Sch5_sect9.4b, WACA-Sch5_sect9.5a, WACA-Sch5_sect9.5b, WACA-Sch5Sect9.4c	International, Nat Legislation
terrestrial mammal	Myotis mystacinus	Whiskered Bat	SU019936	SU0193	2013	Swillbrook Lakes Reserve (CWP 46/48)	Bern-A2, HabDir-A4, HabReg-Sch2, WACA-Sch5_sect9.4b, WACA-Sch5_sect9.5a, WACA-Sch5_sect9.5b, WACA-Sch5Sect9.4c	International, Nat Legislation
terrestrial mammal	Myotis nattereri	Natterer's Bat	SU019936	SU0193	2013	Swillbrook Lakes Reserve (CWP 46/48)	Bern-A2, HabDir-A4, HabReg-Sch2, WACA-Sch5_sect9.4b, WACA-Sch5_sect9.5a, WACA-Sch5_sect9.5b, WACA-Sch5Sect9.4c	International, Nat Legislation
terrestrial mammal	Nyctalus noctula	Noctule Bat	SU03109380	SU0393	2011	Cotswold Water Park, LME, Pit 41	UK Priority Species 2007, Bern-A2, England NERC S.41, HabDir-A4, HabReg-Sch2, WACA-Sch5_sect9.4b, WACA-Sch5_sect9.5a, WACA-Sch5_sect9.5b, WACA-Sch5Sect9.4c	International, Nat Legislation, UK BAP
terrestrial mammal	Pipistrellus	Pipistrelle Bat species	SU02225944 21	SU0294	2012	2 Mill Village, Lower Mill Estate	HabDir-A4, HabReg-Sch2, WACA-Sch5_sect9.4b, WACA-Sch5_sect9.5a, WACA-Sch5_sect9.5b, WACA-Sch5Sect9.4c	International, Nat Legislation
terrestrial mammal	Pipistrellus nathusii	Nathusius's Pipistrelle	SU02629527	SU0295	2012	Cotswold Water Park Pit 34	Bern-A2, HabDir-A4, HabReg-Sch2, WACA-Sch5_sect9.4b, WACA-Sch5_sect9.5a, WACA-Sch5_sect9.5b, WACA-Sch5Sect9.4c	International, Nat Legislation
terrestrial mammal	Pipistrellus pipistrellus	Pipistrelle	SU03109380	SU0393	2011	Cotswold Water Park, LME, Pit 41	Bern-A2, Bern-A3, HabDir-A4, HabReg-Sch2, WACA-Sch5_sect9.4b, WACA-Sch5_sect9.5a, WACA-Sch5_sect9.5b, WACA-Sch5Sect9.4c	International, Nat Legislation
terrestrial mammal	Pipistrellus pygmaeus	Soprano Pipistrelle	SU033936	SU0393	2013	Cotswold Water Park, LME, Pit 41	UK Priority Species 2007, Bern-A2, England NERC S.41, HabDir-A4, HabReg-Sch2, WACA-Sch5_sect9.4b, WACA-Sch5_sect9.5a, WACA-Sch5_sect9.5b, WACA-Sch5Sect9.4c	International, Nat Legislation, UK BAP
terrestrial mammal	Plecotus	Long-eared Bat species	SU02268942 38	SU0294	2011	38 Clearwater, Lower Mill Estate	HabDir-A4, HabReg-Sch2, WACA-Sch5_sect9.4b, WACA-Sch5_sect9.5a, WACA-Sch5_sect9.5b, WACA-Sch5Sect9.4c	International, Nat Legislation
terrestrial mammal	Plecotus auritus	Brown Long-eared Bat	SU033936	SU0393	2012	Cotswold Water Park, LME, Pit 41	UK Priority Species 2007, Bern-A2, England NERC S.41, HabDir-A4, HabReg-Sch2, WACA-Sch5_sect9.4b, WACA-Sch5_sect9.5a, WACA-Sch5_sect9.5b, WACA-Sch5Sect9.4c	International, Nat Legislation, UK BAP

*This is a printout from GCER which does not currently show all bird records for the previous seasons (2013, and in particular 2014)

Wetland bird survey count and averages for Cotswold Water Park West - from British Trust for Ornithology website, Nov 2014

Species	YEAR of count:					Month	5yr average	Current average	Status
	08-Sep	09-Oct	10-Nov	11-Dec	Dec-13				
Mute Swan	253	310	283	271	225	Sep	268	268	
Black Swan	1	2	1	0	0		1	1	
Bewick's Swan	0	0	0	0	0		0	0	
Whooper Swan	0	0	0	0	0		0	0	
White-fronted Goose	0	0	0	0	0		0	0	
White-fronted Goose (European)	0	0	0	0	0		0	0	
White-fronted Goose (Greenland)	0	0	0	0	0		0	0	
Greylag Goose	145	194	115	96	120	Nov	134	134	
Greylag Goose (domestic)	1	0	1	7	0		2	2	
Bar-headed Goose	0	0	0	0	0		0	0	
Canada Goose	421	419	305	223	252	Dec	324	324	
hybrid Canada x domestic Greylag Goose	0	0	0	0	0		0	0	
Barnacle Goose	5	0	0	0	0		3	3	
Brent Goose	0	0	0	0	0		0	0	
Brent Goose (Dark-bellied)	0	0	0	0	0		0	0	
Brent Goose (Light-bellied)	0	0	0	0	0		0	0	
unidentified goose	0	0	0	0	0		0	0	
hybrid goose	1	0	0	0	0		1	1	
Egyptian Goose	0	0	0	0	3	Oct	1	1	
Ruddy Shelduck	0	0	0	0	0		0	0	
Shelduck	7	12	10	8	1	Oct	8	8	
Muscovy Duck	0	0	0	0	0		0	0	
Mandarin Duck	0	0	0	0	0		0	0	
Wigeon	1,390	2,275	1,660	1,686	1,784	Jan	1,759	1,759	
Gadwall	625	420	427	551	209	Jan	446	446	GB
Teal	511	1,337	837	613	641	Jan	788	788	
Green-winged Teal	0	0	0	0	0		0	0	
Mallard	722	842	1,279	1,145	1,266	Sep	1,051	1,051	
Mallard (domestic)	34	63	26	34	5	Feb	32	32	
Pintail	13	17	11	2	42	Mar	17	17	
Garganey	0	0	0	0	0		0	0	
Shoveler	260	184	87	156	257	Nov	189	189	GB

Red-crested Pochard	327	252	205	249	218	Dec	250	250	
Pochard	586	639	489	575	452	Feb	548	548	GB
Ferruginous Duck	0	0	0	0	0		0	0	
Tufted Duck	1,613	1,541	1,445	1,470	1,606	Feb	1,535	1,535	GB
Scaup	0	1	1	0	0		1	1	
Lesser Scaup	0	0	0	0	0		0	0	
Eider	0	0	0	0	0		0	0	
Long-tailed Duck	0	0	0	0	1	Jan	0	0	
Common Scoter	0	0	1	0	0		0	0	
Goldeneye	106	136	100	92	120	Feb	111	111	
Smew	16	18	16	12	9	Feb	14	14	GB
Red-breasted Merganser	0	1	0	1	0		1	1	
Goosander	69	53	75	51	43	Dec	58	58	
Ruddy Duck	11	8	3	5	3	Nov	6	6	
Great Northern Diver	0	0	0	0	0		0	0	
Little Grebe	34	60	34	16	9	Oct	31	31	
Great Crested Grebe	350	365	360	335	278	Sep	338	338	GB
Red-necked Grebe	0	0	0	0	0		0	0	
Slavonian Grebe	0	0	0	0	0		0	0	
Black-necked Grebe	0	1	0	0	0		1	1	
Cormorant	178	139	163	183	165	Jan	166	166	
Bittern	1	1	2	0	1	Dec	1	1	
Little Egret	12	23	17	21	27	Sep	20	20	
Great White Egret	0	0	0	1	0		0	0	
Grey Heron	48	35	32	37	42	Sep	39	39	
Glossy Ibis	0	0	1	0	0		0	0	
Water Rail	8	6	4	3	8	Dec	6	6	
Moorhen	132	151	115	100	67	Feb	113	113	
Coot	5,208	5,330	5,074	4,209	2,488	Oct	4,462	4,462	GB
Oystercatcher	5	7	2	4	0		5	5	
Little Ringed Plover	0	6	1	1	0		3	3	
Ringed Plover	1	0	0	1	0		1	1	
Golden Plover	250	1,200	43	45	0		385	385	
Grey Plover	1	0	0	0	0		1	1	
Lapwing	1,854	2,000	1,349	414	609	Jan	1,245	1,245	
Little Stint	0	0	0	1	0		0	0	
Temminck's Stint	0	0	0	1	0		0	0	
Pectoral Sandpiper	0	0	0	1	0		0	0	
Curlew Sandpiper	0	0	0	1	0		0	0	
Dunlin	1	0	4	3	0		2	2	
Ruff	1	0	0	0	0		1	1	
Jack Snipe	0	0	1	2	1	Jan	1	1	
Snipe	86	93	78	92	-238	Nov	117	117	
Woodcock	2	2	2	1	5	Feb	2	2	

Black-tailed Godwit	1	0	0	2	5	Sep	2	2	
Bar-tailed Godwit	0	0	0	0	1	Sep	0	0	
Whimbrel	0	0	0	0	0		0	0	
Curlew	78	29	42	-10	8	Nov	39	39	
Common Sandpiper	1	2	2	3	0		2	2	
Green Sandpiper	9	11	8	10	9	Sep	9	9	GB
Spotted Redshank	0	0	0	1	0		0	0	
Greenshank	0	0	0	1	0		0	0	
Redshank	3	4	2	2	0		3	3	
Turnstone	0	0	0	0	0		0	0	
Kittiwake	0	0	0	0	0		0	0	
Black-headed Gull	1,500	7,700	7,250	1,217	934	Jan	3,720	3,720	
Common Gull	52	1,025	800	19	14	Dec	382	382	
Lesser Black-backed Gull	4,500	5,600	4,250	152	62	Dec	2,913	2,913	GB
Herring Gull	2,000	2,200	2,300	19	7	Oct	1,305	1,305	
Yellow-legged Gull	6	5	2	1	0		4	4	
Caspian Gull	0	0	0	0	0		0	0	
Iceland Gull	0	0	1	0	0		0	0	
Great Black-backed Gull	2	2	3	0	0		2	2	
Black Tern	0	0	0	0	0		0	0	
Sandwich Tern	0	0	2	0	0		2	2	
Common Tern	0	3	0	0	0		3	3	
Arctic Tern	0	0	0	0	0		0	0	
Kingfisher	9	6	5	5	3	Nov	6	6	

Key to status:

GB Exceeds British national importance threshold

Source:

British Trust for Ornithology WEBS (Wetland Bird Survey) count report for Cotswold Water Park West

Austin, G.E., Calbrade, N.A., Mellan, H.J., Musgrove, A.J., Hearn, R.D., Stroud, D.A., Wotton, S.R. and Holt, C.A. 2014. Waterbirds in the UK 2012/13: The Wetland Bird Survey. BTO/RSPB/JNCC, Thetford.<http://www.bto.org/volunteer-surveys/webs/publications/webs-annual-report>